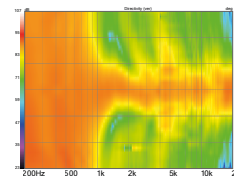
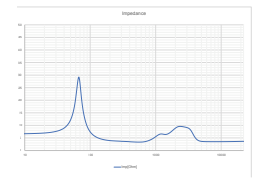


Horizontal Directivity



Vertical Directivity



Impedance

MODEL R4i-LCRS



TECHNICAL SPECIFICATIONS



Based largely on the R4s and R4b. Adapted for inwall applications. Shallow 4" mounting depth and integral aluminum extrusion rear enclosure insure consistent performance and minimal sound propagation to adjacent rooms. Sharing "trickle-down" technology from our flagship S-Series, the DPC-Array here based on three 26mm domes, guarantees excellent directivity control and timbre matching with all R-Series speakers. The Silk diaphragms developed ground up, chosen specifically their smooth, effortless representation of midrange and treble. The 165mm woofer is made from our proprietary HPF pulp, two years in development, bringing new technology to one of the oldest materials used in loudspeaker design. All R-Series speakers share the same DPC-Array and benefit from our unique timbre matching technique across the entire series. Another Perlisten inwall loudspeaker to be certified for THX Dominus - their highest rating.

BASIC

Dimensions (HxWxD)
479 x 298 x 111mm
18.9 x 11.8 x 4.4"

Mounting dimensions (HxWxD)
438 x 257 x 101.7mm
17.2 x 10.1 x 4.0"

Weight
11.2 kg (24.6 lbs.)

Available finishes
Black baffle, white grille

TECHNICAL

Enclosure Alignment
3-way acoustic suspension

Driver complement
DCP-Array: 26mm(3) Silk dome
Woofers: 165mm HPF diaphragm

Sensitivity
88.8dB / 2.83v / 1.0m

Impedance
4Ω nominal / 3.3Ω min

Response Linearity
100 - 20kHz +/-1.5dB window

Frequency Response (-10dB)
46 - 37kHz

Typical In Room bass extension
40Hz

Recommended Amplifier Power
50 - 200W RMS

SPL capability @1m (100-20kHz)
111.8dB peak
111.0dB peak <3% 2nd, 3rd Harmonics

Certification
THX Dominus Surround, Ultra LCR



DPC-Array
Directivity pattern control
*USA Patent pending



HPF - Hybrid Pulp Formulation
Diaphragms made from mixed long fiber hardwood, bamboo and wool

