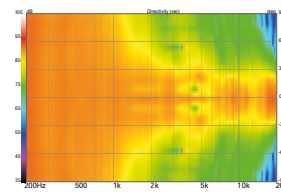
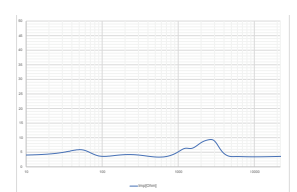


Horizontal Directivity



Vertical Directivity



Impedance

## MODEL R5i-C



## TECHNICAL SPECIFICATIONS



Based largely on the R5c. Adapted for inwall applications. Shallow 4" mounting depth and integral aluminum extrusion rear enclosure insure consistent performance and minimal sound propagation to adjacent rooms. Sharing "trickle-down" technology from our flagship S-Series, the DPC-Array here based on three 26mm domes, guarantees excellent directivity control and timbre matching with all R-Series speakers. The Silk diaphragms developed ground up, chosen specifically their smooth, effortless representation of midrange and treble. The 165mm woofers are made from our proprietary HPF pulp, two years in development, bringing new technology to one of the oldest materials used in loudspeaker design. All R-Series speakers share the same DPC-Array and benefit from our unique timbre matching technique across the entire series. Another Perlisten in-wall loudspeaker to be certified for THX Dominus - their highest rating.

### BASIC

**Dimensions (HxWxD)**  
298 x 665 x 111mm  
11.8 x 26.2 x 4.4"

**Mounting dimensions (HxWxD)**  
257 x 624 x 101.7mm  
10.1 x 24.6 x 4.0"

**Weight**  
15.9 kg (35.0 lbs.)

**Available finishes**  
Black baffle, white grille

### TECHNICAL

**Enclosure Alignment**  
3-way acoustic suspension

**Driver complement**  
DCP-Array: 26mm(3) Silk dome  
Woofers: 165mm(2) HPF diaphragms

**Sensitivity (2pi)**  
89.4dB / 2.83v / 1.0m

**Impedance**  
4Ω nominal / 3.3Ω min

**Response Linearity**  
80 - 20kHz +/-1.5dB window

**Frequency Response (-10dB)**  
40 - 32kHz

**Typical In Room bass extension**  
34Hz

**Recommended Amplifier Power**  
50 - 250W RMS

**SPL capability @1m (100-20kHz)**  
113.4dB peak  
111.0dB peak <3% - 2nd, 3rd Harmonics

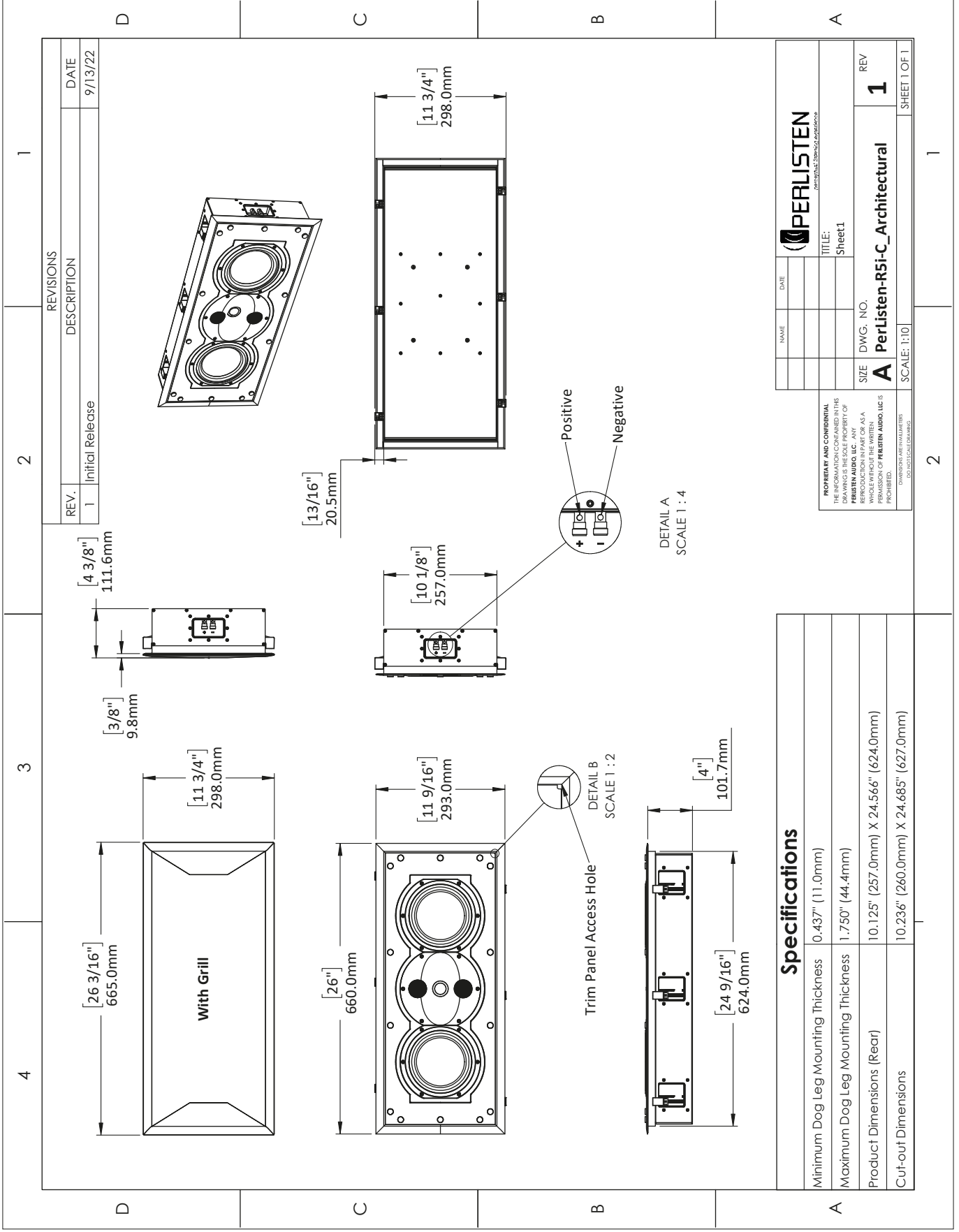
**Certification**  
THX Dominus, THX Ultra



**DPC-Array**  
Directivity pattern control  
\*USA Patent pending



**HPF - Hybrid Pulp Formulation**  
Diaphragms made from mixed long fiber hardwood, bamboo and wool



REVISIONS		DATE
REV.	DESCRIPTION	
1	Initial Release	9/13/22

NAME	DATE	 <small>PERLISTEN AUDIO, LLC</small>
TITLE:	Sheet 1	REV
SIZE	DWG. NO.	<b>1</b>
<b>A Perlisten-R5i-C Architectural</b>		SHEET 1 OF 1
SCALE: 1:10		

**PROPRIETARY AND CONFIDENTIAL**  
 THE INFORMATION CONTAINED IN THIS DRAWING IS THE SOLE PROPERTY OF PERLISTEN AUDIO, LLC. ANY REPRODUCTION OR TRANSMISSION OF THIS DRAWING, IN WHOLE OR IN PART, WITHOUT THE WRITTEN PERMISSION OF PERLISTEN AUDIO, LLC IS PROHIBITED.  
DATE PLOTTED: 09/13/2022 10:00:00 AM

Specifications	
Minimum Dog Leg Mounting Thickness	0.437" (11.0mm)
Maximum Dog Leg Mounting Thickness	1.750" (44.4mm)
Product Dimensions (Rear)	10.125" (257.0mm) X 24.566" (624.0mm)
Cut-out Dimensions	10.236" (260.0mm) X 24.685" (627.0mm)